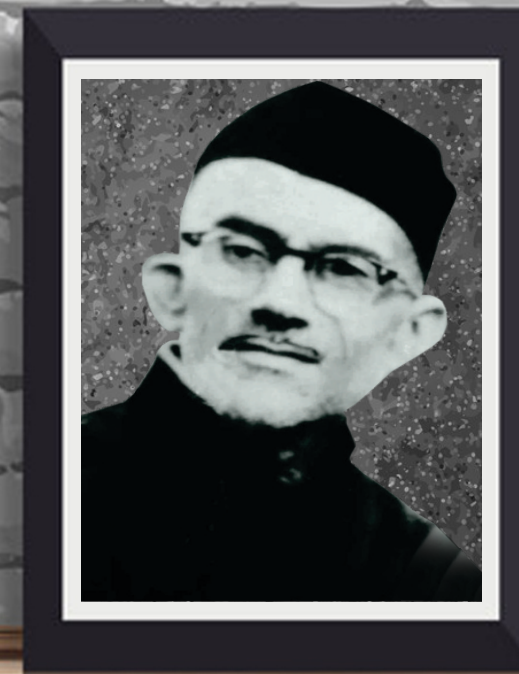


Dedicated to the memories of Mr. Syed Mohammad Rafi and Mrs. Kaneez Begum



Rafi-Kaneez Memorial Education Society was established in 1995 under the aegis of Mr. M.F. Zaidi who was spurred with the fire to fulfil his father, Mr. Syed Mohd. Rafi's mission to bring forth students from the districts and surroundings at par with the rest of the 21st century students of the country. The long nurtured dream of Mr. Rafi found vent through his able and zealous son Mr. M.F. Zaidi, who is determined not to rest but move on till he gets to see Regency as a deemed and well known university. The effort is on and promises are not made or declared only acts are put in and the efforts continue till they become reality. Thereafter starts the next phase of achievement. The achievement is not the swelling of its girth neither the multiplication of the Regency tribe, it is the outcome of its endeavours and the fulfilment of its mission.

Le mot juste Editorial:

In this rapid moving world we have to keep moving in a steady pace and maintain alacrity all the while, lest we be beaten not only by our rivals, but our compatriots too. Believing in this dictum Regency works steadily to keep pace with time. We are futuristic and we believe in working to our full capacity in the present. The past too holds a place in our heads; we remember all our past efforts and the number of times we may have faulted, so that we do not repeat them. I am certain Regent is a mirror to our beliefs, actions and achievement

Rafi-Kaneez Memorial Education Society

Rafi-Kaneez Memorial Education Society now runs the group of well known institutes called Regency Group of Institutes. Regency Public School is the flagship of the conglomerate, which has three wings, the Regency Kangaroo Kids, Regency Junior Wing, and Regency High School. Then there is Regency Institute of Management and Technology (RIMT) and Regency Teachers Training College (RTTC). Of these mentioned Regency Kangaroo Kids is situated in Vijay Laxmi Nagar and the Junior Wing is at Station Road. The rest are situated at the Regency Enclave, Raseora. The campus at the Enclave is a hub of learning activity and resourcefulness. It is a place of pride and a symbol of achievement of the Society which thrives to attain where the impossible becomes possible.



REGENCY

Station Road

It has a holistic approach where developments are measured with fine and gross motor skill developments. Emphasis is given on phonetics, rhymes, learning words and numbers. Cognitives and corporeal developments are assessed by skilled and trained teachers. Children are given utmost independence on their path of learning and growing. This goes on until they begin their formal studies from Grade I.



REGENCY

RASEORA

The wide expanse and the fortitudinous building houses one of the most up to date infrastructure for 21st century learning and skill acquiring. The world is becoming more and more demanding and keeping this in mind Regency moves with time and practises all that will lead her Regents to face the world bravely.